

Sender:

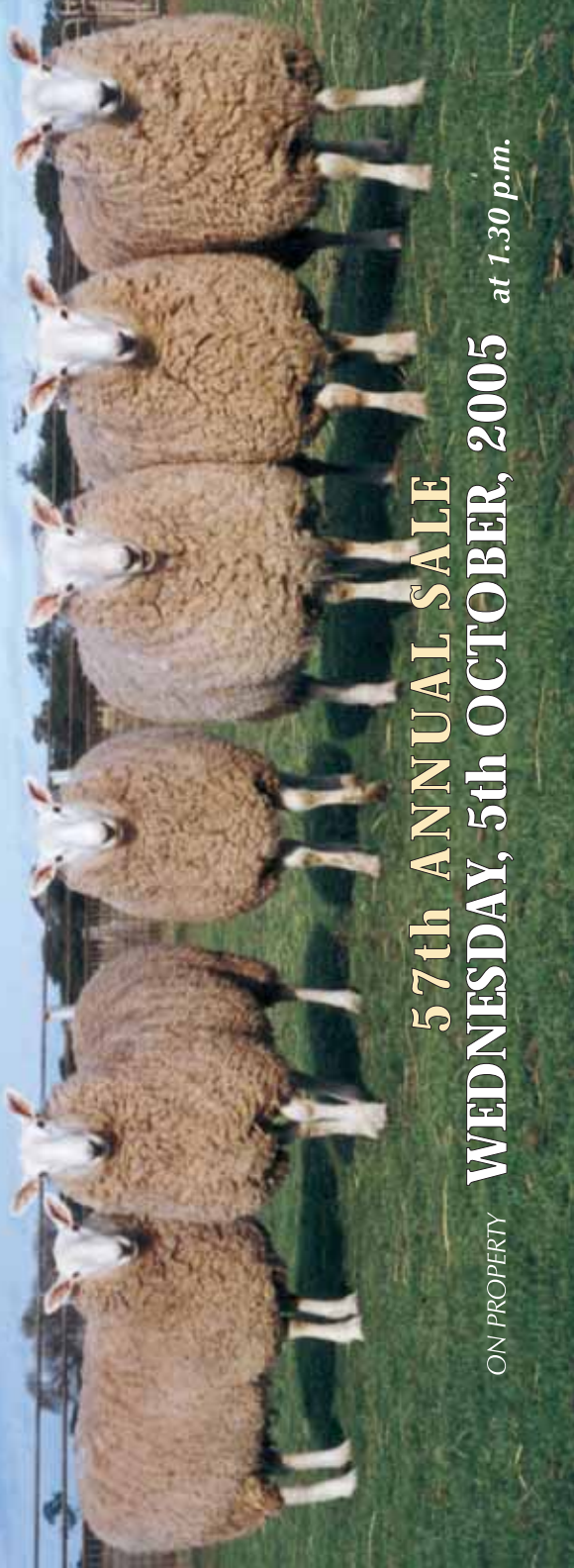
KELSO PARK
230 MANLEY ROAD,
TATURA, VIC., 3616

To:



KIELSO

BORDER LEICESTER STUD



57th ANNUAL SALE
WEDNESDAY, 5th OCTOBER, 2005

ON PROPERTY

at 1.30 p.m.

WE BREED TO
BREED ON



KELSO WELLWIN
A TYPICAL KELSO HEAD

FRONT COVER PHOTO - Kelso rams

BRUCELLOSIS FREE No. 156
N.OJD MN3V No. VS1307

Road Directions to
KELSO PARK



WELCOME TO KELSO

57TH ANNUAL PROPERTY SALE

The Kelso Stud is known as the "Parent Stud of Australia" because of the vast use of Kelso stud rams used since 1914.

The depth of breeding over 90 years has built a type of ram that will perform under a wide range of conditions.

We at Kelso believe the genetic package under the skin is the most important trait to be passed on. The slogan "Bred to Breed On" is as true today as it was when the stud was founded.

All sheep at Kelso are reared under natural conditions. No supplementary feeding is carried out except approximately 10 potential show rams are fed for a period of 100 days prior to Bendigo Sheep Show. They are then replaced back in the group in the middle of July and prepared for our Annual Sale on grass alone. We believe this is the best preparation for the sheep to perform and live longer for our valued clients.

The \$superborder rams are focusing on the top genetic package of the breed. These rams can be purchased with a great deal of confidence. Remembering, "IF YOU CAN MEASURE IT, YOU CAN MANAGE IT". However many worthwhile rams just below the \$superborder are valuable. All rams at Kelso have figures available. A \$104 Index ram is still \$4.00 per ewe joined better than a \$100 Index Ram.

The Central Maternal Progeny Test has proven the value of predictable genetics when run under the same conditions. A variation of over \$40.00 per ewe joined per year was shown on the Border Leicester rams entered.

The Kelso flock is accredited brucellosis free No. 156, and MN3V for OJD. All sheep sell with an ABC Score of 8, of which 5 points are gained by testing and vaccination. Kelso flock is footrot free, normal health practices of vaccination, dipping and drenching are carried out.

Ann, Robert , John & Lisa and I welcome past and future clients and friends to join us on October 5th at Kelso for the 57th Annual Sale – Australia's oldest on-property sale.

Regards,
BRUCE STARRITT

57th ANNUAL SALE

**KELSO BORDER
LEICESTER STUD**

**WEDNESDAY, 5th OCTOBER, 2005
at 1.30 p.m.**

Account – G.B. STARRITT & SON
Kelso Park, 230 Manley Road, Tatura
Phone: (03) 5829 0144
Fax: (03) 5829 0488

Email: starritt@kelsopark.com.au Web: www.kelsopark.com.au

*Kelso Park is situated 10 miles from Shepparton and eight miles
from Tatura (see locality map inside back cover).*

**REGISTERED BORDER LEICESTER
SHEEP TO BE OFFERED**

10 Special Stud Ewes (Singles) 2004 Drop
20 Pairs of Stud Ewes 2004 Drop
30 Special Stud Rams (Singles) 2004 Drop
80 Border Leicester Flock Rams (Pens of 3) 2004 Drop

COMPLIMENTARY LIGHT REFRESHMENTS AVAILABLE AT SALE
Rebate of 2% to agents introducing buyers, in writing, 24 hours prior to sale.

**OFFICIAL DAY FOR INSPECTION: DAY BEFORE SALE UNLESS
BY SPECIAL PRIOR APPOINTMENT WITH THE VENDORS**

Ovine Brucellosis and accredited free flock.

BUYING ORDERS CAREFULLY CARRIED OUT FOR ABSENTEES
*Special arrangements can be made with vendors for the
agistment of sheep pending delivery.*

TRANSPORT AND HOTEL RESERVATIONS CAN BE MADE
ON APPLICATION TO SELLING AGENTS.

Rodwells
BRIAN RODWELL & CO. PTY LTD

Tony Pianto - 0428 532 005
Barry Thompson - 0419 004 415

LANDMARK

an AWB company

SHEPPARTON - 5821 4822
Brian McNamara - 0419 963 487
Warrick Barrett - 0439 337 380

OUTSIDE AGENTS WELCOME



*"Kelso Park",
Mooroopna North
West, Victoria*

*For further information contact:
BRUCE STARRITT (03) 5829 0144
Fax: (03) 5829 0488*

*T*HE HISTORY OF THE KELSO BORDER LEICESTER STUD FLOCK

The Kelso Park Stud was founded in June, 1914, 90 years ago, with the purchase of 10 ewes and one ram from Australia's original Border Leicester flock of J. A. Cochrane, Geelong.

Other sheep were purchased from leading studs from time to time. The greatest subsequent improvement came from rams imported from New Zealand during the decade from the mid-1920's to the early 1930's. These rams enabled Kelso to develop sheep with a heavier fleece. This type of Border Leicester was needed for crossing with Merino ewes to breed the first-cross mothers so valuable for the production of prime lambs. This cross became the most dominant prime lamb mother in Australia, and is to this day.



Starritt Bros.' Champion Border Leicester Ram at Shepparton Show, 1926

These New Zealand sheep, although they were successful in increasing the weight of wool, lacked style. The Kelso studmasters next turned to Scotland, the original home of the breed. They imported a number of rams from leading Scottish breeders with the aim of improving both style and bone. The wool was not quite as heavy; but when blended with second generation homebred sheep, these importations were quite successful in producing the desired aim.

It has been one of the great fountainheads of top quality Border Leicester sheep and has exerted a tremendous influence for breed improvement throughout Australia by making available each year a choice selection of true breeding sires and top quality ewes.

The founder of the stud, the late George Starritt, O.B.E., always maintained that "You would never see a weak headed animal turn out to be a good sire. To reproduce any

animal true to type, a good head is essential". This policy has always been maintained and is evident in the flock today.

Weekly Times 1954 (at the conclusion of an article on Border Leicester breeding in Australia):

"My own opinion is that because he is not in Merino sheep and because he is a quiet retiring personality, Mr. George Starritt has largely been overlooked for what he is – one of the few truly great stud masters and improvers of Australian sheep."

Pastoral Review (conclusion of article on history of Border Leicester breeding in Australia):

"The chief architect of the Australian Border Leicester was undoubtedly Mr. George Starritt, whose genius as a breeder has evolved a type suitable for crossing with the Merino to produce the fat lamb mother so popular today and the basis of prosperity over such a wide section of our primary economy."

George was later to be awarded the O.B.E. for his services to the sheep breeding industry.

A number of rams imported from the flock of R. J. Anderson, New Zealand, helped to fix a solid framed, bulky fleece in the Kelso sheep. In particular, the progeny of the Anderson ram, Kauana Majesty, showed a better carcass and heavier wool. No less than 12 sons of Majesty's progeny won championships at Royal or major sheep shows.

In the period 1920 to 1946, Kelso had the enviable record of winning the most successful exhibitor award at the Melbourne Royal Show on all but five occasions; and in these five years it was placed second most successful exhibitor.

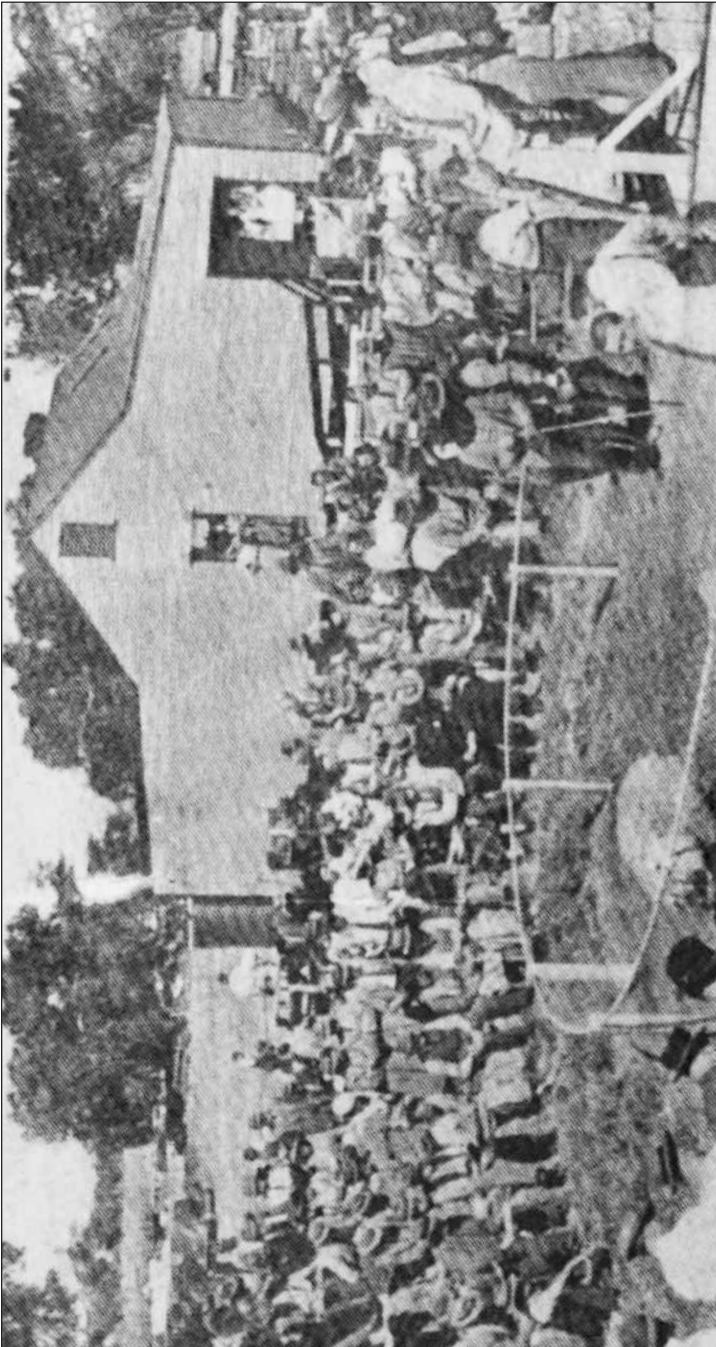
From this time on, many families were established within the flock, enabling Kelso to fix an even type. From time to time top sheep have been purchased from such sources as Thornbury Park, R. R. King's Crymelon Dispersal Sale, Pethick, Campaspe, Black Gate and The Oaks Studs. Many of these purchases have featured Kelso blood prominently in their pedigrees. The stud has always been conducted on strict lines, with certain objects in view. One of the main goals has been to breed a type of sheep most suitable and profitable for the commercial breeder; a Border Leicester ram to achieve the best results when crossed with the Merino ewe. This has made the Border Leicester famous in Australia and reflected in the popularity and success of the Kelso sheep when the greatest majority of stud flocks in Australia carry this Kelso blood.

By this influence and achievement KELSO is known as "The Parent Stud of Australia".

Ray Starritt was awarded the O.B.E. for his services to the sheep industry, in 1977. He had by then served as both State (Victoria) and Federal President of the Australian Society of Breeders of British Sheep.

Their persistence for perfection for 90 years has won for Kelso Border Leicesters the reputation as "the Parent Stud of Australia".

Apart from sheep being sold to all States of Australia, Kelso ewes and rams have been exported to South Africa, New Zealand, China, U.S.A., and survived with honors at MacQuarie Island, where cast for age Border Leicester ewes in lamb bred and survived there in extreme conditions.



FIRST KELSO SALE

TOP PRICES OVER THE YEARS

YEAR	EWE	PURCHASER	RAM	PURCHASER
1948	Gns 50	E. Treasure	Gns 450	W. Lawrence
1949	Gns 65	E. Treasure	Gns 310	E. M. J. O'Neil
1950	Gns 41	Wykes	Gns 190	T. Lucas
1951	Gns 80	J. A. Maxwell	Gns 300	L. H. & M. W. Wundersitz
1952	Gns 81	J. C. Hann	Gns 475	E. M. J. O'Neil
1953	Gns 85	J. Davies	Gns 500	J. Davies
1954	Gns 80	E. Treasure	Gns 300	Berrawinnia Past. Co.
1955	Gns 135	King	Gns 775	F. Cameron & Papworth
1956	Gns 150	Yanko Park	Gns 600	H. F. Baker
			Equal	F. Cameron
1957	Gns 245	Knight	Gns 1010	J. Davies
1958	Gns 115	Salter	Gns 725	McDonall
1959	Gns 70	G. Mort & Co.	Gns 1050	A. Symons
1960	Gns 230	E. C. Carra	Gns 1500	A. Symons
1961				
1962	Gns 55	R. H. Meaklim	Gns 750	C. J. S. Hunt
1963	Gns 165	E. C. Carra	Gns 1000	J. Davies
1964	Gns 140	Bolivia Stud	Gns 1000	Bolivia Stud
1965	Gns 47.5	W. Turner	Gns 1000	J. Davies
1966	Gns 350	Sullivan	Gns 1500	A. Symons
			Equal	N. Ewin
1967	\$310	R. Lynn	\$2000	Balaro Pty.
1968	\$160	Blyth	\$2600	H. F. Baker
1969	\$110	Blyth	\$1500	P. McDouall
1970	\$100	Dr. Haywood	\$720	H. Nixon
1971	\$62.50	Dwyer	\$300	N. Davies
1972	\$55	Dwyer	\$425	J. G. & M. R. Cousins
			Equal	Frolling
1973	\$160	Dr. Haywood	\$1700	Aust. Ag. Co.
1974	\$70	S. Fraser & Co.	\$1000	Aust. Ag. Co.
1975	\$140	S. Tonacia	\$2100	A. Boyle
1976	\$140	E. Brown	\$1100	C. Tyndall
1977	\$200	A. Paton	\$1250	S. Tonacia
1978	\$275	A. Paton	\$3750	Goodwin & Frost
1979	\$370	Dr. Haywood	\$3100	Aust. Ag. Co.
1980	\$350	Floddon Field	\$3000	M. Jeffreys
1981	\$260	Lord	\$7200	I. Chandler & Fenny
1982	\$150	F. Sullivan	\$2300	S. Tonacia
	Equal	E. Brown		
1983	\$250	N. Turnbull	\$2100	Rocky Hills
1984	\$380	J. Micheel	\$4200	Holtsbaum
1985	\$150	J. K. Graham	\$2500	B. Finlay
1986	\$420	J. Micheel	\$2600	P. J. Slade
1987	\$480	C. MacKay	\$5000	G. Grinter
1988	\$140	C. MacKay	\$2600	S. Tonacia
1989	\$220	A. Sedgley	\$2600	Floddon Field
1990	\$160	C. MacKay	\$2700	Holstbaum
1991	\$360	C. MacKay	\$1300	N. Turnbull
1992	\$110	C. MacKay	\$850	S. Barnes
1993	\$230	C. MacKay	\$2200	R. Hall
1994	\$140	P. Jarrick	\$850	R. Hall
1995	\$280	I. Cameron	\$1800	Rathjen & Mead
1996	\$400	A. Sedgley	\$2400	S. Tonacia
1997	\$260	G. & V. Swift	\$2300	S. & I. Tonacia
1998	\$200	G. & V. Swift	\$1700	D. Younger
1999	\$425	J. Honnor	\$6000	G. King
2000	\$200	G. & V. Swift	\$1500	J. Boyer
2001	\$620	E.C. & J.C. Barber	\$5600	E.C. & J.C. Barber
2002	\$275	J. Boyer	\$2200	I. Tonacia
2003	\$280	A. & C. Wilson	\$3600	R. Hall
2004	\$400	Dual	\$6500	Black Gate Stud

*M*EMORANDUM OF SIRES

SHORN WHITE LINE

Kelso 018 (C6632)

Sire: Duenclin Shorn White (C4814)

Dam: Kelso K141 (T) *By:* Campaspe Blend 9 (C119)

Kelso King (C8348)

Sire: Q159 (C7746)

Dam: N175 *By:* Kelso L148 (C5126)

One of the top breeding rams in Central Maternal.

<i>MWWT</i>	<i>WWT</i>	<i>PWWT</i>	<i>PFAT</i>	<i>PEMD</i>	<i>NLW</i>	<i>BORDER \$</i>
0.9	1.7	3.0	-0.6	-0.3	11.4%	113.66

Kelso A444 (D3823) of 2001

Sire: Kelso King

Dam: Kelso W311 *By:* T138

<i>MWWT</i>	<i>WWT</i>	<i>PWWT</i>	<i>PFAT</i>	<i>PEMD</i>	<i>NLW</i>	<i>BORDER \$</i>
-0.5	3.2	-0.3	0.4	0.35	3.2%	107.86

Kelso C272 (D6008)

Sire: Kelso A7 (D3333)

Dam: Kelso Z198 *By:* Kelso R32 (C7941)

<i>MWWT</i>	<i>WWT</i>	<i>PWWT</i>	<i>PFAT</i>	<i>PEMD</i>	<i>NLW</i>	<i>YGFW</i>	<i>BORDER \$</i>
1.5	-0.2	1.5	0.1	0.6	0.1	8.1%	110.65

BLEND LINE

Kelso B153 (D4043) of 2001

Sire: Kelso V77 (D90)

Dam: Kelso V201 *By:* Kelso R32 (C7941)

<i>MWWT</i>	<i>WWT</i>	<i>PWWT</i>	<i>PFAT</i>	<i>PEMD</i>	<i>YGFW</i>	<i>NLW</i>	<i>BORDER \$</i>
0.4	1.6	1.7	-0.21	0.4	0.12	-0.9%	103.82

Kelso D119 (D6013)

Sire: Kelso B153 (D4043)

Dam: Kelso Z248 *By:* Kelso T232 (C8889)

<i>MWWT</i>	<i>WWT</i>	<i>PWWT</i>	<i>PFAT</i>	<i>PEMD</i>	<i>YGFW</i>	<i>NLW</i>	<i>BORDER \$</i>
1.3	2.1	2.2	0.0	0.2	0.1	2.3%	107.01

BLEND LINE *CONT...*



Kelso B153

BONN LINE

Kelso Z126 Bonn 126 (D2283) of 2000

Sire: Kelso Bonn 50 (D1041)

Dam: Kelso V296 *By:* Kelso R32 (C7941)

<i>MWWT</i>	<i>WWT</i>	<i>PWWT</i>	<i>PFAT</i>	<i>PEMD</i>	<i>YGFW</i>	<i>NLW</i>	<i>BORDER \$</i>
0.4	1.6	1.8	-0.3	-0.1	0.1	4.6%	106.17

Junior Champion, Australian Sheep and Wool Show, 2000.

Kelso A115 (D3822) of 2001

Sire: Kelso Z126 (D2283)

Dam: Kelso T535

<i>MWWT</i>	<i>WWT</i>	<i>PWWT</i>	<i>PFAT</i>	<i>PEMD</i>	<i>YGFW</i>	<i>NLW</i>	<i>BORDER \$</i>
-0.05	2.8	2.8	-0.69	-0.5	0.16%	3.5%	105.36

BONN LINE *CONT..*



Kelso Bonn 126

Champion Australian Sheep & Wool Show 2000

Kelso C294 (D6009)

Sire: Kelso Z112 (D3329)

Dam: Kelso A59 *By:* Inverbrakie 64-98 (D940)

<i>MWWT</i>	<i>WWT</i>	<i>PWWT</i>	<i>PFAT</i>	<i>PEMD</i>	<i>YGFW</i>	<i>NLW</i>	<i>BORDER \$</i>
1.9	2.8	2.4	-0.3	0.1	0.1	11.8%	114.61

Kelso C64 (D6010) of 2004

Sire: Kelso Bonn 126 (D2283)

Dam: Kelso X871 *By:* Kelso Stud Ram

<i>MWWT</i>	<i>WWT</i>	<i>PWWT</i>	<i>PFAT</i>	<i>PEMD</i>	<i>YGFW</i>	<i>NLW</i>	<i>BORDER \$</i>
-0.3	1.7	1.8	-0.4	0.1	0.0	2.3	104.52

INTRODUCED RAMS

Kelso Z49 (D3332) of 1999

Sire: Retallack 412-97 (D393)

Dam: W313 *By:* Kelso King (C8348)

2nd Dam: Q379 *By:* Kelso 065 (C6643)

<i>MWWT</i>	<i>WWT</i>	<i>PWWT</i>	<i>PFAT</i>	<i>PEMD</i>	<i>YGFW</i>	<i>NLW</i>	<i>BORDER \$</i>
-1.2	3.2	4.2	-0.6	-0.5	0.1	5.4%	107.50

INTRODUCED RAMS *CONT..*

Kelso Z258 (D3328) of 1999

Sire: Retallack 412-97 (D393)

Dam: T455 *By:* Kelso 0409

2nd Dam: R157 TR *By:* Kelso P528

<i>MWWT</i>	<i>WWT</i>	<i>PWWT</i>	<i>PFAT</i>	<i>PEMD</i>	<i>YGFW</i>	<i>NLW</i>	<i>BORDER \$</i>
-0.3	1.5	2.4	-0.44	-0.3	0.12	2.6%	104.64

Kelso C6 (D5131) of 2003

Sire: Retallack Dippa 552-00 (D3770)

Dam: Kelso A292 *By:* Kelso Index (D1038)

<i>MWWT</i>	<i>WWT</i>	<i>PWWT</i>	<i>PFAT</i>	<i>PEMD</i>	<i>YGFW</i>	<i>NLW</i>	<i>BORDER \$</i>
1.01	3.0	4.0	-0.4	0.1	0.0	-2.7%	106.40

Gleneith Fred 11th 226.01 (D4575)

Sire: Gleneith Fred 4 450-99 (D3206)

Dam: Gleneith 59.95 *By:* Chandivan 29.92 (C7499)

<i>MWWT</i>	<i>WWT</i>	<i>PWWT</i>	<i>PFAT</i>	<i>PEMD</i>	<i>YGFW</i>	<i>NLW</i>	<i>BORDER \$</i>
-1.2	2.2	4.1	0.5	0.4	0.0	10.5%	110.07

Retallack 598.00 (D3775)

Sire: Retallack Longreach 597-96 (C9195)

Dam: Retallack 460-98T *By:* Kelso V77 (D90)

<i>MWWT</i>	<i>WWT</i>	<i>PWWT</i>	<i>PFAT</i>	<i>PEMD</i>	<i>YGFW</i>	<i>NLW</i>	<i>BORDER \$</i>
-0.5	1.5	0.0	-0.2	-0.21	-0.1	-4.4	95.90

Kelso D27 (D6011)

Sire: Gleneith 226-01 (D4575)

Dam: Kelso Z212 (T) *By:* Kelso R32 (C7941)

<i>MWWT</i>	<i>WWT</i>	<i>PWWT</i>	<i>PFAT</i>	<i>PEMD</i>	<i>YGFW</i>	<i>NLW</i>	<i>BORDER \$</i>
-0.1	1.1	1.8	0.8	0.7	0.0	3.0%	104.20

Kelso D84 (D6012) of 2004

Sire: Kelso C6 (D5131)

Dam: Kelso W11 *By:* Kelso T427 (C8890)

<i>MWWT</i>	<i>WWT</i>	<i>PWWT</i>	<i>PFAT</i>	<i>PEMD</i>	<i>YGFW</i>	<i>NLW</i>	<i>BORDER \$</i>
1.8	1.0	1.1	-1.0	-0.4	0.0	-0.1%	104.92

INTRODUCED RAMS *CONT..*

Johno 493-99 (D3112) of 2004

Sire: The Oaks 132-95 (D20)

Dam: Johno 119-95 *By:* Inverbrakie 48-93 (C8082)

<i>MWWT</i>	<i>WWT</i>	<i>PWWT</i>	<i>PFAT</i>	<i>PEMD</i>	<i>YGFW</i>	<i>NLW</i>	<i>BORDER \$</i>
1.6	2.0	3.6	-0.3	-0.4	0.1	9.7%	113.63

Wongajong 52-02 (D6025)

Sire: Johno 40-00 (D4011)

Dam: Wongajong 179-00 *By:* Johno 260-98 (D1638)

<i>MWWT</i>	<i>WWT</i>	<i>PWWT</i>	<i>PFAT</i>	<i>PEMD</i>	<i>YGFW</i>	<i>NLW</i>	<i>BORDER \$</i>
1.8	1.1	0.9	-0.6	0.7	0.2	-0.6%	106.87

Silvendale 503-02 (D6092)

Sire: Silvendale 973-00 (D3720)

Dam: Silvendale 316-99 *By:* Retallack 465-95 (C8602)

<i>MWWT</i>	<i>WWT</i>	<i>PWWT</i>	<i>PFAT</i>	<i>PEMD</i>	<i>YGFW</i>	<i>NLW</i>	<i>BORDER \$</i>
	4.1	5.3	-0.5	-0.6	0.4	2.9%	112.38

Duenclin 67-02 (D5907)

Sire: Duenclin 22-00 (D3886)

Dam: Duenclin 300-97 *By:* Kelso T41 (C8642)

<i>MWWT</i>	<i>WWT</i>	<i>PWWT</i>	<i>PFAT</i>	<i>PEMD</i>	<i>YGFW</i>	<i>NLW</i>	<i>BORDER \$</i>
0.1	2.4	4.7	-0.5	-0.6	0.4	3.6%	109.24

10 SPECIAL STUD EWES

2004 Drop

Lot 1

KELSO E241-TR of 2004

Sire: Kelso A115 (D3822)

Dam: Kelso A396 (TR)by: Retallack 412 (D393)

2nd Dam: Kelso W362 (T)by: Kelso 380 (C8346)

3rd Dam: Kelso N506by: Kelso I29 (C2334)

4th Dam: Kelso I1076 . . .by: Campaspe Jonson 45 (C120)

Lot 1 TR to Lot 15

<i>MWWT</i>	<i>WWT</i>	<i>PWWT</i>	<i>PFAT</i>	<i>PEMD</i>	<i>YGFW</i>	<i>NLW</i>	<i>BORDER \$</i>
-0.9	2.5	2.5	-0.2	-0.1	0.0	2.7%	103.96

Purchaser\$

Lot 2 **KELSO E137 (T) of 2004**

Sire: Kelso D84 (D6012)
 Dam: Kelso A382 (T)by: Kelso Index (D1038)
 2nd Dam: Kelso T280 (T)by: Kelso R32 (C7941)
 3rd Dam: Kelso R343by: Kelso O409 (C6630)
 4th Dam: Kelso M417by: Kelso K196 (C3492)

MWWT	WWT	PWWT	PFAT	PEMD	YGFW	NLW	BORDER \$
1.1	0.6	0.9	-0.6	0.2	0.0	-2.8%	102.50

Purchaser\$

Lot 3 **KELSO E184 of 2004**

Sire: Kelso C6 (D5131)
 Dam: Kelso X252by: Kelso R32 (C7941)
 2nd Dam: Kelso V134by: Kelso King (C8348)
 3rd Dam: Kelso O65by: Kelso K196 (C4392)
 4th Dam: Kelso K530by: Kelso I27 (C2333)

MWWT	WWT	PWWT	PFAT	PEMD	YGFW	NLW	BORDER \$
0.5	2.2	3.0	-0.5	0.2	0.0	-1.4	105.01

Purchaser\$

Lot 4 **KELSO E57 of 2004**

Sire: Kelso D119 (D6013)
 Dam: Kelso Z243by: Kelso T427 (C8890)
 2nd Dam: Kelso V288 (T)by: Kelso 432 (C7941)
 3rd Dam: Kelso Q141 (T)by: Kelso N76 (C6151)
 4th Dam: Kelso N437 (T)by: Kelso J 314

MWWT	WWT	PWWT	PFAT	PEMD	YGFW	NLW	BORDER \$
0.5	1.6	1.6	-0.2	0.2	0.1	0.1%	104.04

Purchaser\$

Lot 5 **KELSO E227 (T) of 2004**

Sire: Kelso A115 (D3822)
 Dam: Kelso X52 (T)by: Kelso V77 (D90)
 2nd Dam: Kelso T223by: Kelso R183
 3rd Dam: Kelso R376by: Kelso M116 (C5599)

MWWT	WWT	PWWT	PFAT	PEMD	YGFW	NLW	BORDER \$
-0.4	2.0	2.1	-0.5	-0.4	0.1	2.4%	104.05

Purchaser\$

Lot 6 **KELSO E74 (T) of 2004**

Sire: Kelso A444 (D3823)
 Dam: Kelso X100 (T) .by: Retallack Super Seven (C8655)
 2nd Dam: Kelso T455by: Kelso O409 (C6630)
 3rd Dam: Kelso R157

MWWT	WWT	PWWT	PFAT	PEMD	YGFW	NLW	BORDER \$
-0.7	1.2	2.0	-0.3	0.1	0.2	1.3%	103.82

Purchaser \$

Lot 7 **KELSO E186 of 2004**

Sire: Kelso Z258 (D3328)
 Dam: Kelso B137 (T)by: Kelso X63 (D2281)
 2nd Dam: Kelso X384by: Kelso Stud Ram
 3rd Dam: Kelso W259by: Kelso R42 (C7942)

MWWT	WWT	PWWT	PFAT	PEMD	YGFW	NLW	BORDER \$
0.1	0.9	1.8	-0.3	-0.2	0.1	-3.2%	100.78

Purchaser \$

Lot 8 **KELSO E142 of 2004**

Sire: Kelso D84 (D6012)
 Dam: Kelso Z97 (T)by: Kelso Bonn 50 (D1041)
 2nd Dam: Kelso T205by: Kelso O10 (C7078)
 3rd Dam: Kelso Q145

MWWT	WWT	PWWT	PFAT	PEMD	YGFW	NLW	BORDER \$
1.0	0.5	0.7	-0.6	-0.3	0.0	1.2%	103.71

Purchaser \$

Lot 9 **KELSO E330 of 2004**

Sire: Kelso C6 (D5131)
 Dam: Kelso C26 (T)by: Kelso B153 (D4043)
 2nd Dam: Kelso A257 (T)by: Inverbrakie 64-98
 3rd Dam: Kelso V187by: Kelso R32 (C7941)
 4th Dam: Kelso R7 (T)by: Kelso P130 (C7082)

MWWT	WWT	PWWT	PFAT	PEMD	YGFW	NLW	BORDER \$
0.6	2.5	2.7	-0.2	0.4	0.0	-0.09	105.31

Purchaser \$

Lot 10 **KELSO E195 of 2004**

Sire: Kelso C6 (D5131)
 Dam: Kelso A409by: Kelso S80 (C8346)
 2nd Dam: Kelso W399

MWWT	WWT	PWWT	PFAT	PEMD	YGFW	NLW	BORDER \$
-0.4	2.3	3.0	0.0	0.5	0.1	0.4%	104.90

Purchaser \$

STUD EWE PENS OF TWO

2004 Drop

Lot 11 KELSO E393 (T) of 2004

Sire: Kelso A115 (D3822)
 Dam: Kelso A222by: Kelso S80 (C8346)
 2nd Dam: Kelso V134by: Kelso King (C8348)

MWWT	WWT	PWWT	PFAT	PEMD	YGFW	NLW	BORDER \$
-0.8	1.6	2.1	-0.2	0.0	0.1	1.8%	102.98

Purchaser\$

Lot 12 KELSO E354 (T) of 2004

Sire: Kelso A115 (D3822)
 Dam: Kelso Z945by: Kelso Sargent (D1042)

MWWT	WWT	PWWT	PFAT	PEMD	YGFW	NLW	BORDER \$
0.0	1.5	1.5	-0.5	-0.5	0.0	2.1%	103.33

Purchaser\$

Lot 13 KELSO E413 of 2004

Sire: Kelso C272 (D6008)
 Dam: Kelso D132by: Retallack 598 (D3775)
 2nd Dam: Kelso B54by: Kelso V77 (D90)

MWWT	WWT	PWWT	PFAT	PEMD	YGFW	NLW	BORDER \$
1.9	0.0	1.1	0.4	0.4	0.0	3.4%	106.54

Purchaser\$

Lot 14 KELSO E377 of 2004

Sire: Kelso C272 (D6008)
 Dam: Kelso X245by: Kelso R74 (C7943)
 2nd Dam: Kelso R114 (T)by: Kelso P346 (C7084)

MWWT	WWT	PWWT	PFAT	PEMD	YGFW	NLW	BORDER \$
0.1	2.2	1.4	-0.2	0.1	0.0	3.3%	104.59

Purchaser\$

Lot 15 KELSO E242 (TR) of 2004

Sire: Kelso A115 (D3822) (TR to Lot 1)
 Dam: Kelso A396 (TR)by: Retallack 412-97 (D393)
 2nd Dam: Kelso W362 (T)by: Kelso S80 (C8346)

Lot 15 TR to Lot 1

MWWT	WWT	PWWT	PFAT	PEMD	YGFW	NLW	BORDER \$
0.8	2.4	2.4	-0.2	-0.1	0.0	2.6%	103.82

Purchaser\$

Lot 16 **KELSO E271 (T) of 2004**

Sire: Kelso A115 (D3822)
Dam: Kelso A318 (T)by: Sargent (D1042)
2nd Dam: Kelso Q52 (T)by: Kelso M277 (C5601)

MWWT	WWT	PWWT	PFAT	PEMD	YGFW	NLW	BORDER \$
-0.3	1.9	2.1	-0.3	-0.2	0.2	1.0%	103.64

Purchaser\$

Lot 17 **KELSO E379 of 2004**

Sire: Kelso C272 (D6008)
Dam: Kelso C114by: Retallack Dipper (D3770)
2nd Dam: Kelso A293 (T)by: Kelso X63 (D2281)

MWWT	WWT	PWWT	PFAT	PEMD	YGFW	NLW	BORDER \$
0.1	1.4	2.8	-0.1	0.0	0.1	-0.3%	104.16

Purchaser\$

Lot 18 **KELSO E342 (T) of 2004**

Sire: Kelso A115 (D3822)
Dam: Kelso B249by: Kelso Z177
2nd Dam: Kelso X259by: Kelso S80 (C8346)

MWWT	WWT	PWWT	PFAT	PEMD	YGFW	NLW	BORDER \$
-0.5	2.1	1.9	-0.3	-0.1	0.0	1.4%	103.30

Purchaser\$

Lot 19 **KELSO E332 of 2004**

Sire: Kelso A444 (D3823)
Dam: Kelso W68by: Kelso S80 (C8346)
2nd Dam: Kelso Q180by: Kelso L148 (C5126)

MWWT	WWT	PWWT	PFAT	PEMD	YGFW	NLW	BORDER \$
-0.4	0.9	2.0	-0.1	0.4	0.2	0.9%	104.00

Purchaser\$

Lot 20 **KELSO E53 (T) of 2004**

Sire: Kelso D119 (D6013)
Dam: Kelso B2 (T)by: Kelso A101 (D3334)
2nd Dam: Kelso Z376 (T)by: Kelso W47 (D1037)

MWWT	WWT	PWWT	PFAT	PEMD	YGFW	NLW	BORDER \$
0.8	1.1	1.2	0.0	0.2	0.0	1.3%	104.24

Purchaser\$

Lot 21 **KELSO E445 (T) of 2004**

Sire: Kelso B153 (D4043)
 Dam: Kelso B400by: Kelso Stud Ram

MWWT	WWT	PWWT	PFAT	PEMD	YGFW	NLW	BORDER \$
-0.2	1.2	1.5	0.2	0.5	0.1	1.8%	103.90

Purchaser\$

Lot 22 **KELSO E182 (T) of 2004**

Sire: Kelso C6 (D5131)
 Dam: Kelso X246by: Kelso King (C8348)
 2nd Dam: Kelso T100by: Kelso Q 385 (C7748)

MWWT	WWT	PWWT	PFAT	PEMD	YGFW	NLW	BORDER \$
-0.8	2.2	2.8	-0.2	0.2	0.0	2.6%	105.240

Purchaser\$

Lot 23 **KELSO E207 (T) of 2004**

Sire: Kelso Z258 (D3328)
 Dam: Kelso T98by: Kelso O18 (C6632)
 2nd Dam: Kelso O697by: Kelso O93 (C6634)

MWWT	WWT	PWWT	PFAT	PEMD	YGFW	NLW	BORDER \$
-0.2	1.1	2.0	-0.5	-0.3	0.1	1.5%	103.88

Purchaser\$

Lot 24 **KELSO E205 (T) of 2004**

Sire: Kelso C6 (D5131)
 Dam: Kelso B12 (T)by: Johno 4699
 2nd Dam: Kelso V120by: Kelso Balmoral (C8343)

MWWT	WWT	PWWT	PFAT	PEMD	YGFW	NLW	BORDER \$
1.6	2.0	2.2	-0.1	0.5	0.0	2.2%	107.41

Purchaser\$

Lot 25 **KELSO E146 of 2004**

Sire: Kelso D84 (D6012)
 Dam: Kelso A280 (T)by: S80 (C8346)
 2nd Dam: Kelso X274 (T)by: Kelso King (C8348)

MWWT	WWT	PWWT	PFAT	PEMD	YGFW	NLW	BORDER \$
0.3	1.3	1.6	-0.4	-0.2	0.0	2.0%	104.29

Purchaser\$

Lot 26 **KELSO E79 (T) of 2004**

Sire: Kelso D84 (D6012)
Dam: Kelso X225by: Kelso S80 (C8346)
2nd Dam: Kelso V39 (TR)by: Kelso Balmoral (C8343)

MWWT	WWT	PWWT	PFAT	PEMD	YGFW	NLW	BORDER \$
1.3	0.4	0.7	-0.3	0.2	0.0	0.0%	103.78

Purchaser\$

Lot 27 **KELSO E211 (T) of 2004**

Sire: Kelso C6 (D5131)
Dam: Kelso A169 (T)by: Kelso X49 (D2282)
2nd Dam: Kelso X117 (TR) .by: Retallack Super Seven (C8655)

MWWT	WWT	PWWT	PFAT	PEMD	YGFW	NLW	BORDER \$
1.6	2.0	2.5	-0.3	0.3	-0.1	-3.5%	104.48

Purchaser\$

Lot 28 **KELSO E440 of 2004**

Sire: Kelso C272 (D6008)
Dam: Kelso D110 (T)by: Kelso B153 (D4043)
2nd Dam: Kelso Z243by: Kelso T427 (C8890)

MWWT	WWT	PWWT	PFAT	PEMD	YGFW	NLW	BORDER \$
0.5	-0.1	0.9	-0.1	0.4	0.1	2.5%	104.92

Purchaser\$

Lot 29 **KELSO E361 (T) of 2004**

Sire: Kelso A115 (D3822)
Dam: Kelso W1by: Kelso T427 (C8890)
2nd Dam: Kelso T224by: Kelso R627

MWWT	WWT	PWWT	PFAT	PEMD	YGFW	NLW	BORDER \$
0.2	1.6	1.3	-0.6	-0.4	0.0	0.4%	102.56

Purchaser\$

Lot 30 **KELSO E345 of 2004**

Sire: Kelso A115 (D3822)
Dam: Kelso Z164 (T)by: Kelso Sargent (D1042)
2nd Dam: Kelso P468 (T)by: Kelso L148 (C5126)

MWWT	WWT	PWWT	PFAT	PEMD	YGFW	NLW	BORDER \$
-0.8	1.9	1.8	-0.2	0.0	0.0	1.3%	102.26

Purchaser\$

SPECIAL STUD RAMS 2004 DROP

Lot 31 KELSO E55 (T) of 2004

Sire: Kelso D119 (D6013)
 Dam: Kelso B288by: Kelso Z49 (D3332)
 2nd Dam: Kelso Z81 (T)by: Retallack 412 (D393)
 3rd Dam: Kelso V360by: Kelso Balmoral (C8343)
 4th Dam: Kelso P200 (T)by: Kelso N88 (C6152)

MWWT	WWT	PWWT	PFAT	PEMD	YGFW	NLW	BORDER \$
0.6	2.7	3.1	-0.4	-0.2	0.1	2%	106.90

Purchaser\$

Lot 32 KELSO E202 (T) of 2004

Sire: Kelso C6 (D5131)
 Dam: Kelso V106 (T)by: Kelso Balmoral (C8343)
 2nd Dam: Kelso O274by: Kelso M116 (C5599)
 3rd Dam: Kelso J650by: Kelso H222 (C2326)
 4th Dam: Kelso G308by: Kelso Deane (B5172)

MWWT	WWT	PWWT	PFAT	PEMD	YGFW	NLW	BORDER \$
1.1	1.9	2.4	0.1	0.5	0.0	2.2%	107.14

3rd Pair Rams ASBA Show.

Purchaser\$

Lot 33 KELSO E158 of 2004

Sire: Kelso C6 (D5131)
 Dam: Kelso W311by: Kelso T138 (C8888)
 2nd Dam: Kelso Q356by: Kelso L480 (C5598)
 3rd Dam: Kelso M642by: Kelso K39 (C4391)
 4th Dam: Kelso J703by: Kelso D109 (B8453)

MWWT	WWT	PWWT	PFAT	PEMD	YGFW	NLW	BORDER \$
1.9	1.9	2.7	-0.3	0.3	0.0	-3.5%	105.25

W311 is the dam of A444 used in stud.

Purchaser\$

Lot 34 KELSO E110 of 2004

Sire: Johno 493-99 (D3112)
 Dam: Kelso X7 (T)by: Kelso V77 (D90)
 2nd Dam: Kelso Q198by: Kelso K196 (C4392)
 3rd Dam: Kelso O154 (T)by: Kelso H571 (C2328)
 4th Dam: Kelso K471by: Kelso D22 (B9462)

MWWT	WWT	PWWT	PFAT	PEMD	YGFW	NLW	BORDER \$
1.2	2.1	3.2	-0.4	-0.4	0.1	4.7%	109.10

Purchaser\$

Lot 35 **KELSO E116 of 2004**

Sire: Wongajong 52-02 (D6025)
 Dam: Kelso Z74 (T)by: Retallack 412-97 (D393)
 2nd Dam: Kelso R376by: Kelso J83
 3rd Dam: Kelso Reg. Ewe

MWWT	WWT	PWWT	PFAT	PEMD	YGFW	NLW	BORDER \$
1-1	1.2	1.4	-0.3	0.5	0.1	0.6%	105.81

Purchaser\$

Lot 36 **KELSO E113 of 2004**

Sire: Wongajong 52-02 (D6025)
 Dam: Kelso Z943by: Retallack 412-97 (D393)
 2nd Dam: Kelso Reg. Ewe

MWWT	WWT	PWWT	PFAT	PEMD	YGFW	NLW	BORDER \$
1.2	1.2	1.2	-0.1	0.7	0.1	0.3%	105.58

Purchaser\$

Lot 37 **KELSO E18 of 2004**

Sire: Kelso D27 (D6011)
 Dam: Kelso C204by: Kelso Sargent (D1042)
 2nd Dam: Kelso Z33 (T)by: Kelso Bonn 41 (D1040)
 3rd Dam: Kelso V255 (T)by: Kelso S80 (C8346)
 4th Dam: Kelso N73 (T)by: Kelso I29 (C2334)

MWWT	WWT	PWWT	PFAT	PEMD	YGFW	NLW	BORDER \$
0.8	1.1	1.5	0.2	0.4	-0.1	1.0%	104.05

Purchaser\$

Lot 38 **KELSO E124 (T) of 2004**

Sire: Kelso C6 (D5131)
 Dam: Kelso C13 (T)by: Kelso B84 (D4042)
 2nd Dam: Kelso V358 (T)by: Kelso Q385 (D7748)
 3rd Dam: Kelso P169 (T)by: Kelso M175 (C5600)
 4th Dam: Kelso M616 (T)by: Kelso I27 (C2333)

Twin to Lot 53

MWWT	WWT	PWWT	PFAT	PEMD	YGFW	NLW	BORDER \$
0.8	2.5	3.1	-0.2	0.2	0.0	0.8%	106.72

Purchaser\$

Lot 39**KELSO E47 of 2004**

Sire: Kelso D119 (D6013)
 Dam: Kelso A73by: Inverbrakie 64-98
 2nd Dam: Kelso V38 (TR)by: Kelso Balmoral (C8343)
 3rd Dam: Kelso P455 (T)by: Kelso K196 (C4392)
 4th Dam: Kelso M284by: Kelso T205 (C3924)

MWWT	WWT	PWWT	PFAT	PEMD	YGFW	NLW	BORDER \$
1.4	1.8	0.8	0.4	0.8	0.0	2.6%	105.75

Purchaser\$

Lot 40**KELSO E163 of 2004**

Sire: Kelso C6 (D5131)
 Dam: Kelso B68 (T)by: Kelso A7 (D3333)
 2nd Dam: Kelso W151by: Kelso T111 (C8887)
 3rd Dam: Kelso O308 (TR)by: Kelso M175 (C5600)
 4th Dam: Kelso M430 by: Campaspe Killarney 43 (C2615)

MWWT	WWT	PWWT	PFAT	PEMD	YGFW	NLW	BORDER \$
1.5	1.9	2.5	-0.3	0.1	0.0	-0.2%	106.16

Purchaser\$

Lot 41**KELSO E48 of 2004**

Sire: Kelso D119 (D6013)
 Dam: Kelso Z44 (T) .by: Kelso Retallack 412-97 (D393)
 2nd Dam: Kelso T223by: Kelso R183
 3rd Dam: Kelso R376by: Kelso M116 (C5599)
 4th Dam: Kelso Reg. Ewe

MWWT	WWT	PWWT	PFAT	PEMD	YGFW	NLW	BORDER \$
0.8	1.4	1.9	-0.4	-0.2	0.0	2.9%	105.99

E48 used as a lamb in stud.

Purchaser\$

Lot 42**KELSO E162 of 2004**

Sire: Kelso C6 (D5131)
 Dam: Kelso W87 (TR)by: Kelso T138 (C8888)
 2nd Dam: Kelso Q685by: Reg. Ram

MWWT	WWT	PWWT	PFAT	PEMD	YGFW	NLW	BORDER \$
-0.2	2.4	3.2	0.4	0.5	0.0	4.5%	105.08

Purchaser\$

Lot 43 **KELSO E100 of 2004**

Sire: Duencin 67-02 (D5907)
 Dam: Kelso C62by: Johno 65-00
 2nd Dam: Kelso Y748by: Kelso Reg. Ram

MWWT	WWT	PWWT	PFAT	PEMD	YGFW	NLW	BORDER \$
0.3	2.8	3.9	-0.6	-0.6	0.2	0.4%	106.33

Purchaser\$

Lot 44 **KELSO E140 of 2004**

Sire: Kelso D84 (D6012)
 Dam: Kelso A257 (T)by: Inverbrakie 64-98 (D940)
 2nd Dam: Kelso V187by: Kelso R32 (C7941)
 3rd Dam: Kelso R7 (T)by: Kelso P130 (C7082)
 4th Dam: Kelso O312by: Kelso T205 (C3924)

MWWT	WWT	PWWT	PFAT	PEMD	YGFW	NLW	BORDER \$
0.6	1.7	1.2	-0.6	0.0	0.0	2.1%	104.86

Purchaser\$

Lot 45 **KELSO E135 of 2004**

Sire: Kelso D84 (D6012)
 Dam: Kelso B55by: Kelso A101 (D3334)
 2nd Dam: Kelso Z106by: Kelso Bonn 50 (D1041)
 3rd Dam: Kelso P388 (T)by: Kelso H571 (C2328)
 4th Dam: Kelso M574 (T)by: Kelso K293 (C4393)

MWWT	WWT	PWWT	PFAT	PEMD	YGFW	NLW	BORDER \$
1.4	1.0	1.2	-0.5	-0.2	0.0	3.1%	106.06

Purchaser\$

Lot 46 **KELSO E152 of 2004**

Sire: Kelso A444 (D3823)
 Dam: Kelso W263by: Kelso Balmoral (C8343)
 2nd Dam: Kelso T510by: Kelso Q385 (C7748)
 3rd Dam: Kelso O59 (TR)by: Kelso K196 (C4392)
 4th Dam: Kelso K45by: Kelso G891 (C1396)

MWWT	WWT	PWWT	PFAT	PEMD	YGFW	NLW	BORDER \$
0.9	1.3	2.3	-0.1	0.6	0.1	2.9%	108.04

K45 is the dam of N440 used in stud.

Purchaser\$

Lot 47 **KELSO E102 of 2004**

Sire: Silvendale 503-02 (D6092)
 Dam: Kelso B46by: Kelso V77 (D90)
 2nd Dam: Kelso X1065by: Kelso T138 (C8888)
 3rd Dam: Kelso V187by: Kelso R32 (C7941)
 4th Dam: Kelso R7by: Kelso P130 (C7082)

MWWT	WWT	PWWT	PFAT	PEMD	YGFW	NLW	BORDER \$
0.7	3.0	3.8	-0.5	-0.1	0.2	0.2%	107.55

Purchaser \$

Lot 48 **KELSO E32 of 2004**

Sire: Kelso C64 (D6010)
 Dam: Kelso B16by: Kelso A7 (D3333)
 2nd Dam: Kelso W144by: Kelso Balmoral (C8343)
 3rd Dam: Kelso T300 (T)by: Kelso R42 (C7942)
 4th Dam: Kelso R379 (T)by: Kelso P376 (C7085)

MWWT	WWT	PWWT	PFAT	PEMD	YGFW	NLW	BORDER \$
1.1	1.5	1.8	-0.1	0.4	0.1	4.3%	108.04

Purchaser \$

Lot 49 **KELSO E43 of 2004**

Sire: Kelso C64 (D6010)
 Dam: Kelso Z412by: Kelso King (C8348)
 2nd Dam: Kelso V256by: Kelso King (C8348)
 3rd Dam: Kelso P156 (T)by: Kelso M175 (C5600)
 4th Dam: Kelso N376 . . .by: Campaspe Major 11 (C3894)

MWWT	WWT	PWWT	PFAT	PEMD	YGFW	NLW	BORDER \$
0.6	1.6	1.9	-0.4	0.2	0.1	4.6%	107.84

Purchaser \$

Lot 50 **KELSO E161 of 2004**

Sire: Kelso C6 (D5131)
 Dam: Kelso A8 (T)by: Kelso T427 (C8890)
 2nd Dam: Kelso V253by: Kelso S80 (C8346)
 3rd Dam: Kelso R571by: Kelso M116 (C5599)
 4th Dam: Kelso P46by: Kelso N143 (C6154)

MWWT	WWT	PWWT	PFAT	PEMD	YGFW	NLW	BORDER \$
1.4	1.9	2.5	-0.4	0.4	0.0	-1.3%	106.13

Purchaser \$

Lot 51 **KELSO E410 (T) of 2004**

Sire: Kelso A444 (D3823)
 Dam: Kelso C28 (T)by: Kelso Z126 (D2283)
 2nd Dam: Kelso X392by: Kelso King (C8348)
 3rd Dam: Kelso V296by: Kelso R32 (C7941)
 4th Dam: Kelso R584

MWWT	WWT	PWWT	PFAT	PEMD	YGFW	NLW	BORDER \$
2.2	2.4	3.5	-0.7	-0.2	0.2	5.3%	112.42

X392 dam of ram sold \$1800 W. Chambers. V296 dam of Bonn 126 used in stud.

Purchaser\$

Lot 52 **KELSO E31 (T) of 2004**

Sire: Kelso C64 (C6010)
 Dam: Kelso Z158by: Retallack 412 (D393)
 2nd Dam: Kelso W294by: Kelso T111 (C8887)
 3rd Dam: Kelso N389 (TR)by: Kelso L710 (C5128)
 4th Dam: Kelso L628by: Kelso G121 (C1393)

MWWT	WWT	PWWT	PFAT	PEMD	YGFW	NLW	BORDER \$
1.2	2.2	2.6	0.2	0.6	0.1	5.5%	110.02

Purchaser\$

Lot 53 **KELSO E123 (T) of 2004**

Sire: Kelso C6 (D5131)
 Dam: Kelso C13 (T)by: Kelso B84 (D4042)
 2nd Dam: Kelso V358 (T)by: Kelso Q385 (C7748)
 3rd Dam: Kelso P169 (T)by: Kelso M175 (C5600)
 4th Dam: Kelso M616 (T)by: Kelso I27 (C2333)

Twin to Lot 38

MWWT	WWT	PWWT	PFAT	PEMD	YGFW	NLW	BORDER \$
0.9	2.6	3.2	-0.2	0.3	0.0	1.3%	107.39

Purchaser\$

Lot 54 **KELSO E59 (T) of 2004**

Sire: Kelso D119 (D6013)
 Dam: Kelso Z238by: Kelso T232 (C8889)
 2nd Dam: Kelso W214by: Kelso S80 (C8346)
 3rd Dam: Kelso S50 (T)by: Kelso Q160 (C7747)
 4th Dam: Kelso O560by: Kelso L480 (C5598)

MWWT	WWT	PWWT	PFAT	PEMD	YGFW	NLW	BORDER \$
1.0	1.9	2.4	0.1	0.0	0.1	3.3%	106.90

Purchaser\$

Lot 55 **KELSO E285 (T) of 2004**

Sire: C6 (D5131)
 Dam: Kelso V379by: Kelso R74 (C7943)
 2nd Dam: Kelso R582by: Kelso M116 (C5599)
 3rd Dam: Kelso Reg. Ewe

MWWT	WWT	PWWT	PFAT	PEMD	YGFW	NLW	BORDER \$
0.7	2.0	3.3	0.0	0.4	0.1	4.2%	109.36

V379 is the dam of 3 special stud rams.

Purchaser\$

Lot 56 **KELSO E147 of 2004**

Sire: Kelso D84 (D6012)
 Dam: Kelso C46 (T)by: Retallack Dipper
 2nd Dam: Kelso V216by: Kelso R627 (C7940)
 3rd Dam: Kelso Q178by: Kelso L148 (C5126)
 4th Dam: Kelso N249 (T)by: Kelso I20 (C3012)

MWWT	WWT	PWWT	PFAT	PEMD	YGFW	NLW	BORDER \$
2.3	1.5	2.6	-1.0	-0.9	-0.1	-3.2	104.62

Purchaser\$

Lot 57 **KELSO E154 of 2004**

Sire: Kelso C6 (D5131)
 Dam: Kelso Z268by: Kelso King (C8348)
 2nd Dam: Kelso T298 (T)by: Kelso O409 (C6630)
 3rd Dam: Kelso N270

MWWT	WWT	PWWT	PFAT	PEMD	YGFW	NLW	BORDER \$
1.1	2.3	3.2	-0.1	0.3	0.1	1.4%	107.94

Purchaser\$

Lot 58 **KELSO E66 of 2004**

Sire: Kelso A444 (D3823)
 Dam: Kelso C48 (T)by: Retallack Dipper (D3770)
 2nd Dam: Kelso A49 (T)by: Kelso Bonn 126 (D2283)
 3rd Dam: Kelso V201by: Kelso R32 (C7941)
 4th Dam: Kelso O220 (T)by: Kelso I29 (C2334)

MWWT	WWT	PWWT	PFAT	PEMD	YGFW	NLW	BORDER \$
0.3	2.0	3.7	-0.5	0.1	0.1	-1.8%	105.55

V201 is the dam of B153 used in stud.

Purchaser\$

Lot 59**KELSO E115 of 2004**

Sire: Wongajong 52-02 (D6025)
 Dam: Kelso Z81by: Retallack 412 (D393)
 2nd Dam: Kelso V360by: Kelso Balmoral (C8343)
 3rd Dam: Kelso P200 (T)by: Kelso N88 (C6152)
 4th Dam: Kelso M138 (T)by: Kelso J202 (C3715)

MWWT	WWT	PWWT	PFAT	PEMD	YGFW	NLW	BORDER \$
0.5	1.2	1.0	-0.3	0.5	0.1	-2.6%	102.35

Purchaser\$

Lot 60**KELSO E44 of 2004**

Sire: Kelso C64 (D6010)
 Dam: Kelso A64 (T) . . .by: Deepwater 414-98 (D2193)
 2nd Dam: Kelso X252by: Kelso R32 (C7941)
 3rd Dam: Kelso V134by: Kelso King (C8348)
 4th Dam: Kelso O65by: Kelso K196 (C4392)

MWWT	WWT	PWWT	PFAT	PEMD	YGFW	NLW	BORDER \$
0.4	2.1	2.8	-0.1	0.4	0.0	-2.2%	104.08

Purchaser\$



ABOUT \$UPERBORDER\$

Border Leicester rams have been traditionally sold on the basis of their visual appearance. In the absence of other information, buyers have selected flock rams on visual characters such as size and wool style. Good feed, early drop or being reared as a single, all help to make a ram look good. However, a ram with good genetics, particularly for fertility, will be more commercially valuable to both the 1st and 2nd cross breeder.

These unseen traits can now be measured and along with visual traits, assessed at the point of sale. Breeders in the **\$uperBorder\$** group record growth rate, fat cover and muscle depth to find the better carcass animals. They also use birth, rearing and pedigree records to identify the more fertile and better milking bloodlines. They use common sires to make comparisons between stud flocks. These records are used in the LAMBPLAN program for correction of the effects of age, twinning and feeding regime, and for calculation of their genetic merit.

This gives each ram its own genetic value in each of the production traits, rated against the average for the breed.

These ratings are called Estimated Breeding Values, or EBV's. (see below for example).

These EBV's are also combined into an index, called the Border Leicester Dollar Index. Those rams that have an index above the cut-off score may be tagged as **\$uperBorder\$**, provided they are also of good visual type.

KELSO LAMB PLAN TEST RESULTS 2005 FOR FLOCK RAMS

READING AN ESTIMATED BREEDING VALUE (EBV): Each SuperBorder\$ ram is sold with information about its separate estimated breeding values or EBV's, which can be used to choose the rams that suit your production system. A typical listing will show • MWWT: Ewe effect on weaning wt (eg. milk) • WWT: Weaning wt (kg) • PWWT: Post Weaning WT • PFAT: Post Fat • P.EMD: Post Eye Muscle Depth • PFEC: Post Faecal Egg Count • YGFW: Yearling wool weight (kg) • NLW: Number of lambs weaned (proportion). A weight EBV of +2.0 means that the ram has genes that are 2kg better than the breed average. A lamb gets half its genes from the ram, so will be 1kg heavier than the breed average when joined to equal quality ewes. In a similar way, an NLW EBV of +0.10 means that the ram has genes for 10% more lambs above the breed average. The first-cross ewe breed from that ram will wean 5% more lambs than the breed average. If you want more growth, higher fertility or less fat, choose the rams that have those characters.

2005 Sale Flock Ram EBV's

ID	SEX	BWT	WWT	MWWT	PWWT	PFAT	PEMD	PFEC	NLW	Border
020041200404E003	1	0.0	0.4	0.4	1.3	0.0	0.3	-0.1	4.5%	105.88
020041200404E028	1	0.0	1.5	1.1	1.9	-0.3	0.4		3.7%	107.87
020041200404E046	1	0.0	1.1	1.1	1.1	0.0	0.5		1.9%	105.63
020041200404E050	1	0.1	1.6	0.9	2.1	-0.2	0.1		2.3%	106.23
020041200404E052	1	0.1	1.3	1.2	2.2	0.1	0.4		2.4%	107.00
020041200404E060	1	0.0	1.3	1.8	1.5	-0.3	-0.3		1.5%	105.85
020041200404E061	1	0.0	1.5	1.6	1.7	0.0	-0.1		2.0%	105.86
020041200404E070	1	-0.2	1.3	-0.6	2.7	-0.1	0.4	-0.2	2.2%	105.28
020041200404E081	1	0.1	0.6	1.1	1.3	-0.3	0.2	-0.3	2.7%	106.15
020041200404E092	1	0.0	1.2	0.0	2.4	-0.2	0.6	-0.1	4.3%	108.10
020041200404E107	1	0.2	1.1	0.8	2.2	-0.5	-0.2	0.4	3.3%	106.81
020041200404E112	1	0.0	2.4	1.7	2.9	-0.1	0.0	-0.1	3.4%	108.97
020041200404E125	1	0.0	0.5	1.5	1.3	0.0	0.1		4.0%	106.89
020041200404E132	1	0.1	1.0	1.7	1.4	-0.3	0.2		2.6%	107.26
020041200404E159	1	0.2	1.7	1.6	2.6	-0.5	0.0		0.9%	107.23
020041200404E178	1	0.1	2.1	0.6	1.5	-0.1	0.3	-0.1	6.0%	107.68
020041200404E188	1	0.1	2.7	0.2	4.0	-0.2	4.0	-0.2	2.8%	109.09
020041200404E192	1	-0.2	0.5	0.2	1.1	-0.1	-0.5	-0.2	1.8%	104.29
020041200404E197	1	0.3	2.2	0.6	2.5	-0.2	0.3		-0.3%	104.96
020041200404E198	1	0.2	2.3	0.1	2.7	-0.2	0.5		1.2%	106.17
020041200404E206	1	0.0	1.6	1.7	1.8	0.0	0.3	-0.1	1.6%	106.59
020041200404E213	1	0.0	1.5	0.3	1.9	-0.6	-0.1		3.5%	106.53
020041200404E214	1	0.0	1.8	0.1	2.4	-0.3	0.3		5.4%	108.41
020041200404E228	1	0.0	0.5	1.5	1.6	-0.1	0.4		3.2%	107.72
020041200404E235	1	0.1	1.7	0.4	1.7	-0.4	0.1		2.9%	105.72
020041200404E245	1	0.1	1.4	1.0	3.3	-0.1	0.0		2.0%	107.51
020041200404E246	1	0.2	2.6	1.8	3.5	-0.6	-0.2		3.9%	110.60
020041200404E247	1	0.3	3.1	1.6	3.7	-0.4	-0.1		4.0%	110.64
020041200404E256	1	0.2	1.2	1.2	2.2	0.1	0.5		2.2%	107.11
020041200404E257	1	-0.1	0.2	0.8	1.1	0.1	0.5		4.9%	106.98
020041200404E259	1	-0.1	0.2	0.7	0.8	0.1	0.3		4.3%	105.31
020041200404E261	1	0.1	1.3	0.2	3.5	-0.4	-0.3		3.9%	107.76
020041200404E276	1	-0.1	0.4	0.8	1.7	0.3	0.3		6.4%	107.89
020041200404E284	1	0.0	2.7	0.1	3.5	-0.6	-0.4		3.8%	107.52
020041200404E288	1	0.0	1.0	1.4	1.5	-0.1	0.3		2.8%	106.88
020041200404E310	1	0.1	1.2	0.9	1.6	0.0	0.6		4.8%	107.86
020041200404E312	1	-0.2	1.0	0.6	2.1	-0.4	0.2	-0.2	0.8%	105.93
020041200404E316	1	-0.2	1.2	-0.3	2.5	-0.2	0.5	-0.2	3.2%	106.87
020041200404E321	1	0.1	1.6	2.0	1.2	-0.3	0.3		5.2%	109.32
020041200404E327	1	0.1	0.9	1.0	1.4	-0.4	0.4		0.6%	105.36
020041200404E357	1	0.2	1.8	1.0	2.8	-0.2	0.0		1.2%	106.38
020041200404E368	1	0.2	2.1	0.4	2.0	-0.1	0.1	-0.1	6.3%	107.75
020041200404E380	1	0.1	1.9	1.2	1.8	-0.1	0.2		4.2%	107.90
020041200404E381	1	-0.2	1.5	0.9	2.5	-0.2	0.2	-0.2	2.4%	107.70
020041200404E384	1	0.1	1.3	1.0	1.2	-0.4	0.2		5.1%	107.63
020041200404E385	1	0.0	0.9	1.0	1.0	-0.1	0.4		5.7%	107.82
020041200404E389	1	-0.1	0.6	0.5	1.6	0.0	0.0		5.4%	106.56
020041200404E391	1	0.0	0.3	-0.5	1.5	-0.1	0.1		5.1%	105.25
020041200404E392	1	0.0	1.7	1.0	1.7	-0.6	-0.4		5.7%	107.44
020041200404E402	1	0.1	2.0	-0.4	2.1	-0.1	0.3		3.4%	105.29
020041200404E408	1	-0.2	1.9	-0.2	2.8	-0.5	0.0	-0.2	1.8%	106.03
020041200404E412	1	-0.2	1.5	-0.2	2.5	-0.3	0.3	-0.1	1.2%	105.48
020041200404E414	1	0.0	0.6	1.0	2.0	-0.5	-0.1		7.1%	109.77
020041200404E417	1	0.0	1.4	0.9	1.9	-0.5	-0.4		3.7%	106.30
020041200404E418	1	-0.2	1.3	-0.5	2.7	-0.3	0.0	-0.3	2.9%	105.81
020041200404E419	1	-0.2	1.4	-0.5	2.6	-0.3	0.0	-0.3	2.4%	105.24
020041200404E421	1	-0.1	0.3	1.1	1.3	0.0	0.3		6.3%	108.54
020041200404E424	1	0.0	0.9	0.8	1.8	0.1	0.4		4.3%	107.18
020041200404E435	1	0.2	2.0	2.3	2.6	-0.3	0.2	-0.3	0.9%	108.35
020041200404E436	1	0.0	0.6	0.3	1.4	0.0	0.2		4.8%	106.13
020041200404E447	1	0.0	0.4	0.5	1.0	0.1	0.4		4.5%	105.78
020041200404E464	1	0.0	1.0	1.9	1.5	-0.2	0.3	0.8	0.2%	105.83
020041200404E467	1	-0.3	0.3	2.1	1.5	-0.3	0.1	-0.2	2.4%	107.67
020041200404E487	1	0.0	0.8	1.3	1.9	-0.4	0.2		2.7%	107.44

PENS OF 3 BORDER LEICESTER FLOCK RAMS

Lots 61 to 78 - 2003 Drop

Lot 61

TAG.	PWWT	PWT	YWT	PFAT	PEMD	NLW	BORDER \$

Purchaser \$

Lot 62

TAG.	PWWT	PWT	YWT	PFAT	PEMD	NLW	BORDER \$

Purchaser \$

Lot 63

TAG.	PWWT	PWT	YWT	PFAT	PEMD	NLW	BORDER \$

Purchaser \$

Lot 64

TAG.	PWWT	PWT	YWT	PFAT	PEMD	NLW	BORDER \$

Purchaser \$

Lot 65

TAG.	PWWT	PWT	YWT	PFAT	PEMD	NLW	BORDER \$

Purchaser \$

Lot 66

TAG.	PWWT	PWT	YWT	PFAT	PEMD	NLW	BORDER \$

Purchaser \$

Lot 67

TAG.	PWWT	PWT	YWT	PFAT	PEMD	NLW	BORDER \$

Purchaser \$

Lot 68

TAG.	PWWT	PWT	YWT	PFAT	PEMD	NLW	BORDER \$

Purchaser \$

Lot 69

TAG.	PWWT	PWT	YWT	PFAT	PEMD	NLW	BORDER \$

Purchaser \$

Lot 70

TAG.	PWWT	PWT	YWT	PFAT	PEMD	NLW	BORDER \$

Purchaser \$

Lot 71

TAG.	PWWT	PWT	YWT	PFAT	PEMD	NLW	BORDER \$

Purchaser \$

Lot 72

TAG.	PWWT	PWT	YWT	PFAT	PEMD	NLW	BORDER \$

Purchaser \$

Lot 73

TAG.	PWWT	PWT	YWT	PFAT	PEMD	NLW	BORDER \$

Purchaser \$

Lot 74

TAG.	PWWT	PWT	YWT	PFAT	PEMD	NLW	BORDER \$

Purchaser \$

Lot 75

TAG.	PWWT	PWT	YWT	PFAT	PEMD	NLW	BORDER \$

Purchaser \$

Lot 76

TAG.	PWWT	PWT	YWT	PFAT	PEMD	NLW	BORDER \$

Purchaser \$

Lot 77

TAG.	PWWT	PWT	YWT	PFAT	PEMD	NLW	BORDER \$

Purchaser \$

Lot 78

TAG.	PWWT	PWT	YWT	PFAT	PEMD	NLW	BORDER \$

Purchaser \$

Lot 79

TAG.	PWWT	PWT	YWT	PFAT	PEMD	NLW	BORDER \$

Purchaser \$

Lot 80

TAG.	PWWT	PWT	YWT	PFAT	PEMD	NLW	BORDER \$

Purchaser \$

Lot 81

TAG.	PWWT	PWT	YWT	PFAT	PEMD	NLW	BORDER \$

Purchaser \$

Lot 82

TAG.	PWWT	PWT	YWT	PFAT	PEMD	NLW	BORDER \$

Purchaser \$

Lot 83

TAG.	PWWT	PWT	YWT	PFAT	PEMD	NLW	BORDER \$

Purchaser \$

Lot 84

TAG.	PWWT	PWT	YWT	PFAT	PEMD	NLW	BORDER \$

Purchaser \$

Lot 85

TAG.	PWWT	PWT	YWT	PFAT	PEMD	NLW	BORDER \$

Purchaser \$

Lot 86

TAG.	PWWT	PWT	YWT	PFAT	PEMD	NLW	BORDER \$

Purchaser \$

Lot 87

TAG.	PWWT	PWT	YWT	PFAT	PEMD	NLW	BORDER \$

Purchaser \$

Lot 88

TAG.	PWWT	PWT	YWT	PFAT	PEMD	NLW	BORDER \$

Purchaser \$

Lot 89

TAG.	PWWT	PWT	YWT	PFAT	PEMD	NLW	BORDER \$

Purchaser \$



PERCENTILE REPORT

Animals born in 2004

Band	Bwt	Wwt	Mwwt	Pwwt	Ffat	Pemd	Ywt	Yfat	Yemd	Ydfw	Yfd	Pfec	NLW	Hsc	Border \$
0	-0.52	5.55	5.45	9.02	-1.58	2.02	11.12	-3.93	1.82	0.77	-2.65	-2.96	0.17	4.74	128.90
1	-0.28	3.70	3.34	6.24	-0.91	1.00	6.71	-2.35	0.97	0.42	-0.46	-1.73	0.12	2.55	118.03
2	-0.23	3.37	2.97	5.37	-0.77	0.86	6.13	-1.99	0.82	0.37	-0.35	-1.34	0.11	2.31	116.19
3	-0.20	3.10	2.76	5.00	-0.69	0.78	5.72	-1.76	0.72	0.33	-0.29	-1.10	0.11	2.15	115.09
4	-0.18	2.94	2.60	4.70	-0.64	0.71	5.46	-1.60	0.66	0.31	-0.25	-0.94	0.10	2.02	114.27
5	-0.17	2.82	2.47	4.46	-0.60	0.66	5.23	-1.49	0.61	0.30	-0.22	-0.83	0.10	1.93	113.67
10	-0.10	2.39	2.00	3.76	-0.45	0.48	4.51	-1.15	0.43	0.24	-0.14	-0.57	0.08	1.62	111.51
15	-0.06	2.11	1.69	3.33	-0.36	0.37	4.04	-0.92	0.32	0.19	-0.09	-0.44	0.07	1.41	110.28
20	-0.04	1.88	1.45	2.99	-0.29	0.29	3.71	-0.77	0.24	0.16	-0.06	-0.35	0.06	1.22	109.27
25	-0.02	1.70	1.26	2.70	-0.24	0.23	3.41	-0.63	0.17	0.13	-0.04	-0.29	0.05	1.07	108.46
30	-0.01	1.54	1.08	2.44	-0.20	0.17	3.12	-0.52	0.11	0.11	-0.02	-0.25	0.05	0.93	107.69
35	0.00	1.39	0.92	2.21	-0.16	0.12	2.84	-0.42	0.06	0.09	0.00	-0.21	0.04	0.80	106.95
40	0.02	1.25	0.77	1.99	-0.13	0.07	2.55	-0.33	0.02	0.07	0.03	-0.17	0.04	0.68	106.20
45	0.03	1.11	0.62	1.76	-0.09	0.03	2.28	-0.24	-0.01	0.05	0.05	-0.14	0.03	0.56	105.43
50	0.05	0.98	0.47	1.55	-0.06	-0.01	1.96	-0.15	-0.04	0.04	0.07	-0.11	0.02	0.46	104.71
55	0.07	0.86	0.34	1.34	-0.02	-0.03	1.67	-0.06	-0.08	0.02	0.10	-0.08	0.02	0.37	104.03
60	0.08	0.73	0.21	1.14	0.00	-0.07	1.40	0.03	-0.13	0.01	0.14	-0.06	0.01	0.28	103.36
65	0.10	0.58	0.07	0.94	0.02	-0.11	1.14	0.06	-0.18	-0.01	0.17	-0.05	0.01	0.18	102.68
70	0.13	0.44	-0.07	0.75	0.05	-0.17	0.87	0.15	-0.23	-0.02	0.22	-0.02	0.00	0.09	102.00
75	0.16	0.29	-0.13	0.54	0.09	-0.22	0.61	0.27	-0.30	-0.03	0.26	0.01	0.00	-0.01	101.27
80	0.19	0.12	-0.29	0.30	0.15	-0.30	0.32	0.40	-0.38	-0.04	0.32	0.05	-0.01	-0.05	100.47
85	0.23	-0.08	-0.47	0.01	0.22	-0.38	-0.06	0.55	-0.48	-0.06	0.38	0.10	-0.01	-0.17	99.68
90	0.29	-0.20	-0.70	-0.13	0.31	-0.50	-0.21	0.77	-0.60	-0.08	0.49	0.19	-0.02	-0.34	99.11
95	0.37	-0.54	-1.11	-0.63	0.44	-0.70	-0.78	1.11	-0.80	-0.13	0.70	0.38	-0.03	-0.06	97.51
100	0.93	-1.93	-3.75	-3.96	1.43	-1.97	-5.80	5.58	-2.28	-0.61	3.37	3.86	-0.11	-2.78	86.25

KELSO BUYERS INSTRUCTION SLIP

NAME to whom purchase is to be transferred:

.....

Flock No. Phone No.

Address:

.....

Pen	Tag No.	Description	Price

INSURANCE, FOR:

INVOICE TO:

Date 5/10/05

BUYER'S SIGNATURE:

Special Note to Buyers

NO VERBAL INSTRUCTIONS CAN BE ACCEPTED

Rodwells
BRIAN RODWELL & CO. PTY LTD

Tony Pianto - 0428 532 005
Barry Thompson - 0419 004 415

LANDMARK
an AWB company

SHEPPARTON - 5821 4822
Brian McNamara - 0419 963 487
Warrick Barrett - 0439 337 380

Lined writing area consisting of 25 horizontal dotted lines.